

Overlay Door Panel Preparation for Models 2175WCOL, 2115WCOL and 2175BEVOL

IMPORTANT

The thickness of the wood overlay panel must be 3/4".

1. Use the following instructions to create or have a wood overlay panel created for your Échelon Wine Captain or Beverage Center model as shown in **Figure 1**.

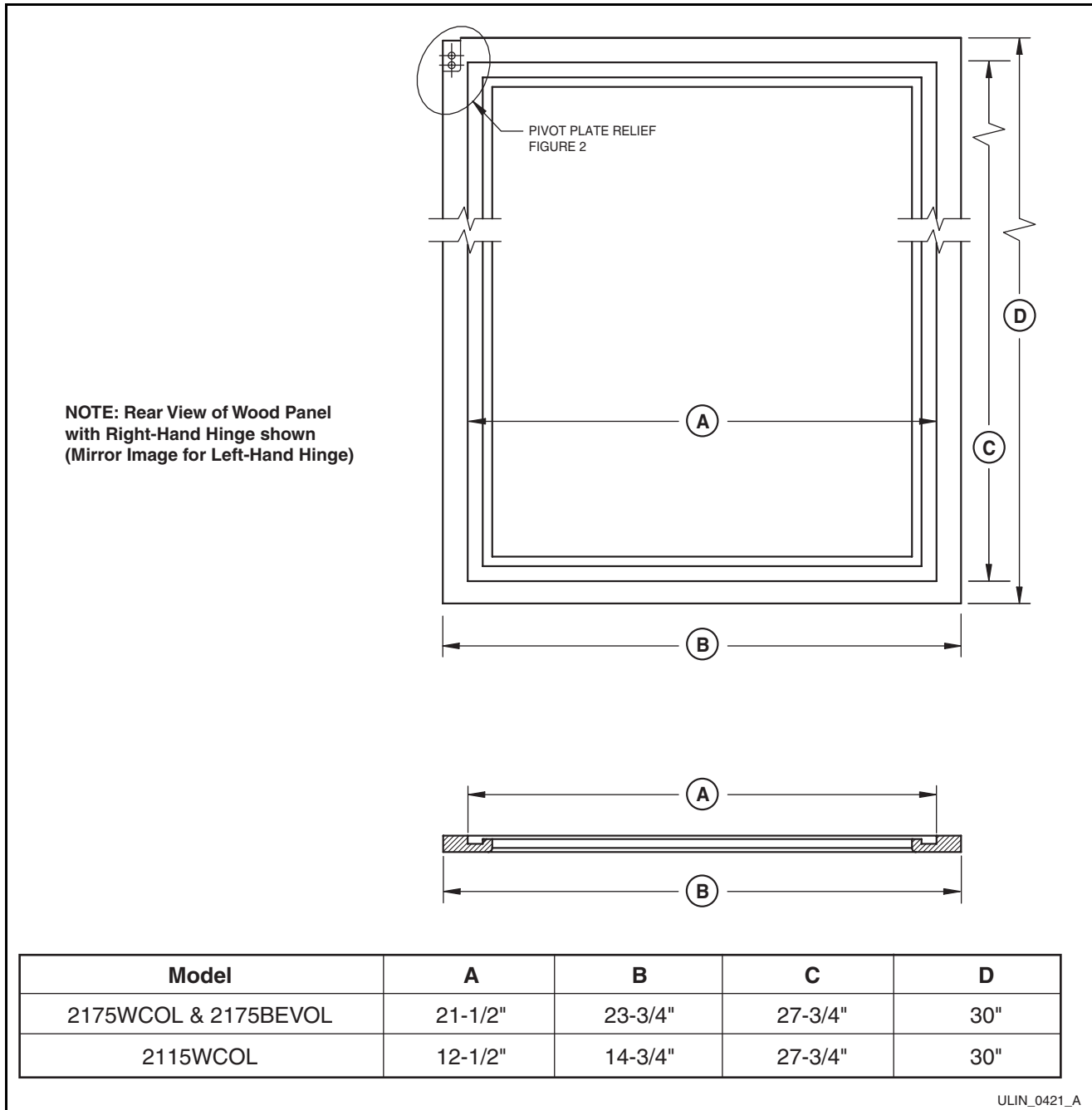


Figure 1
Wood Panel Dimensions

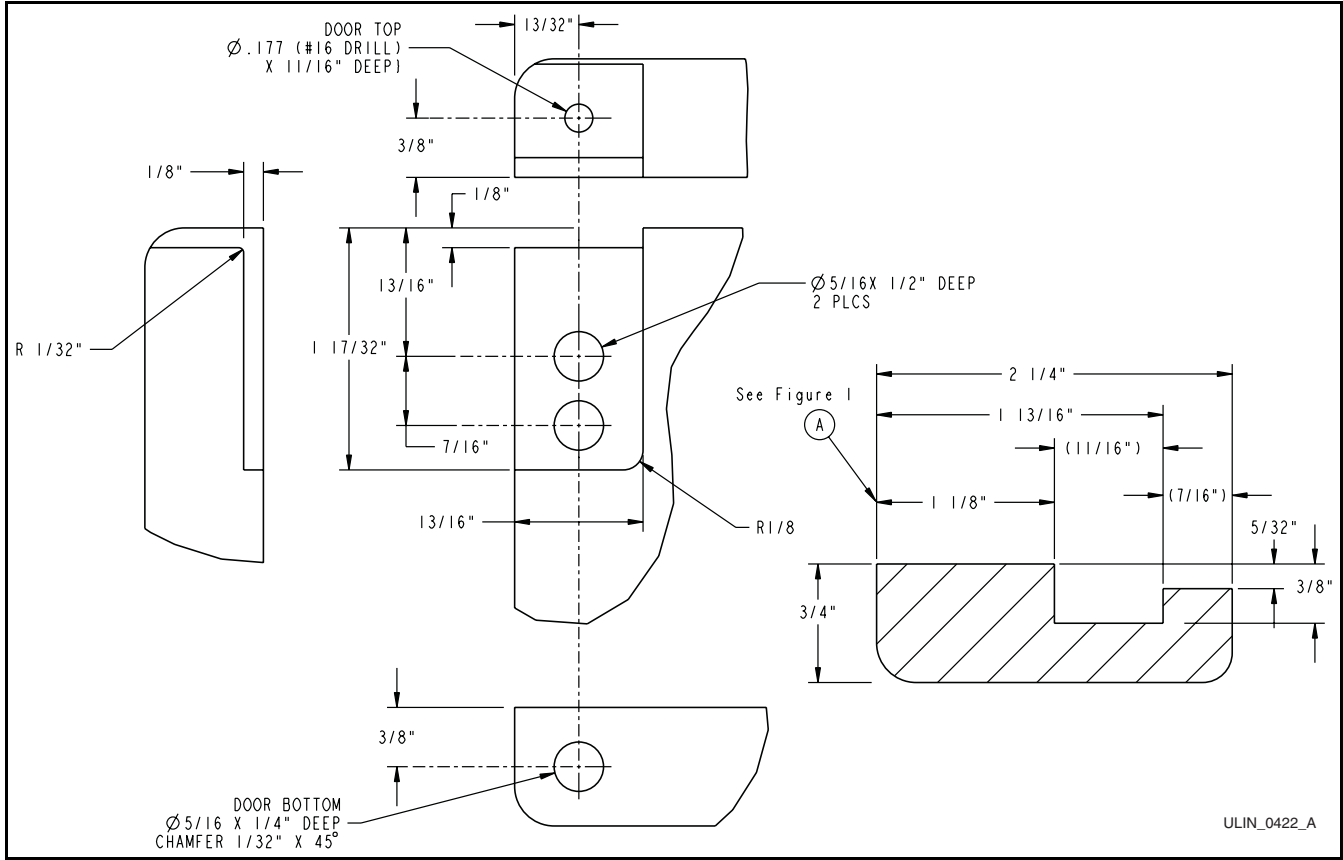


Figure 2
Pivot Plate Relief, Hinge Holes and Routing

IMPORTANT

The wood overlay panel must not weigh more than 20 lbs.

2. Create pivot plate relief as shown in **Figure 2**.
3. Drill holes for pivot plate mounts, upper door hinge and lower door hinge as shown.
4. The overlay door panel must be installed in accordance with the Installation Instructions, part number 30138.