

Using NetCommand®



Welcome to NetCommand

NetCommand® is an intelligent control system that makes your Mitsubishi TV the heart of your home theater. With NetCommand, the TV sends signals to the other devices in the system via the IR emitters, telling the devices to play, record, change inputs, adjust volume, change channels and many more functions. All of this is accomplished with the TV's remote control.

IR Learning and IEEE 1394 Support

The "IR Learning" feature of NetCommand allows the TV to learn the remote control signals for new devices that the TV is not already preprogrammed to operate. NetCommand® can also control IEEE 1394 devices by sending control signals on a FireWire® cable.

Using NetCommand is completely optional

When you first turn on the TV, the NetCommand Setup Wizard launches. Quit the Setup Wizard if you would rather set up NetCommand later or not use it at all.

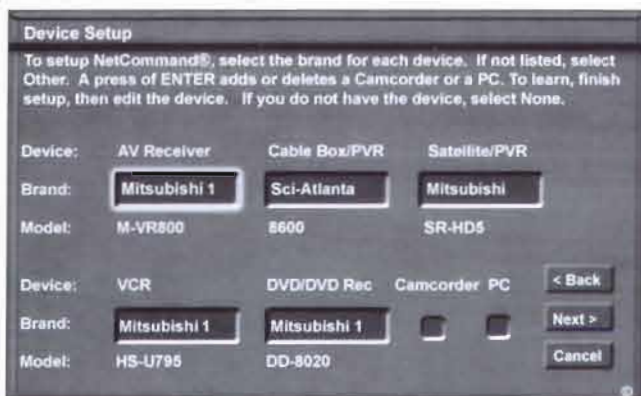
Setting Up NetCommand

To set up NetCommand when you turn on your TV for the first time:

- When you turn on your Mitsubishi TV for the first time, a Setup screen opens.
- Follow the on-screen instructions and steps 3 and 4 of the following instructions.

To set up NetCommand at any other time:

1. Press TV MENU to open the main TV menu.
2. Select the NetCommand icon and press ENTER, then select Initial and press ENTER.



Device Setup screen

3. Press ADJUST ◀ or ▶ to highlight a device type (A/V receiver, cable box, satellite receiver, VCR, DVD player, camcorder, PC).
4. To select the manufacturer and model for each device type, press ADJUST ▲ or ▼.
 - For each device type, if the manufacturer and model are not listed, select Other.
 - For every device type you do not intend to connect to your TV, select None.
Exception: If a camcorder or PC is connected, press ENTER to select it. Press ENTER again to deselect camcorder or PC.
5. After you have chosen all device types, select **Next >**. You can now choose to set up TV Guide On Screen® before finalizing your choices in the Review screen.

Managing Your Home Theater

Use the Edit NetCommand screen to add new devices, change device settings and connections, delete devices, and use the "Learn" feature for remote control signals not already in memory. On-screen instructions guide you through each step. Your choices are:

Add: Add a new device to the NetCommand setup.

Change: Change the brand/model or input connections of a device already listed. "Learn" the remote control signals of devices listed as "Other" brands.

Guide: Activate/deactivate TV Guide On Screen®, change ZIP code, add or change TV Guide On Screen input selections.

Review: View a list of all devices and input connections in the NetCommand home theater configuration. Turn unused TV inputs or devices on/off.

Delete: Remove a device or erase the NetCommand home-theater configuration.

Initial: Start setup at the beginning. This option is only available after deleting the complete configuration or if NetCommand was not set up when the TV was first powered on.

Adding IEEE 1394 Devices

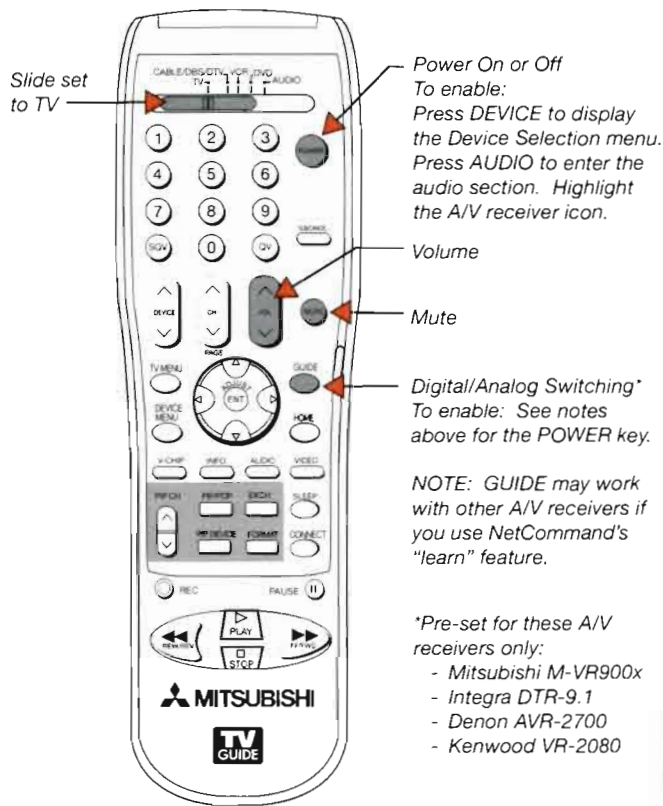
Compatible IEEE-1394 devices are automatically detected by the TV. Connect the IEEE-1394 device to the network and power it on. A series of screens will guide you through the setup process. See your TV Owner's Guide for detailed information.

Quick Reference Guide
WD-62827, WD-62927, WD-73827, WD-73927

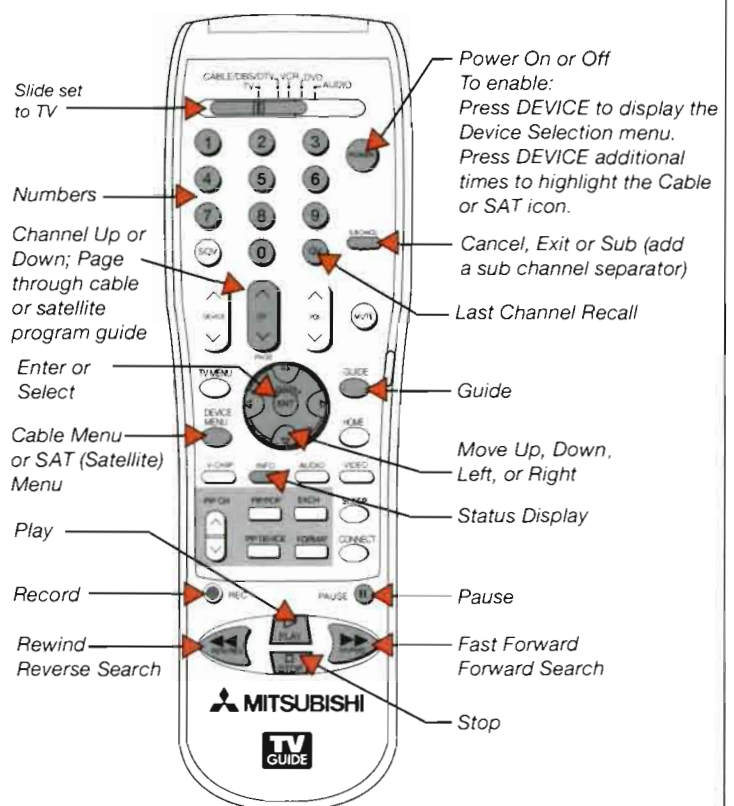


NetCommand® Control Keys

A/V Receiver Specialized Device Keys

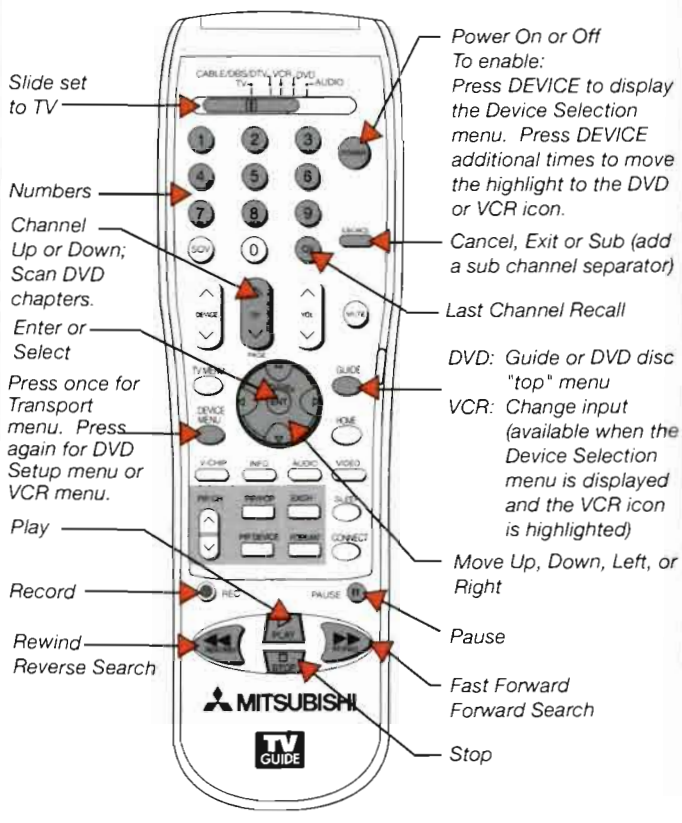


Cable or Satellite Specialized Device Keys

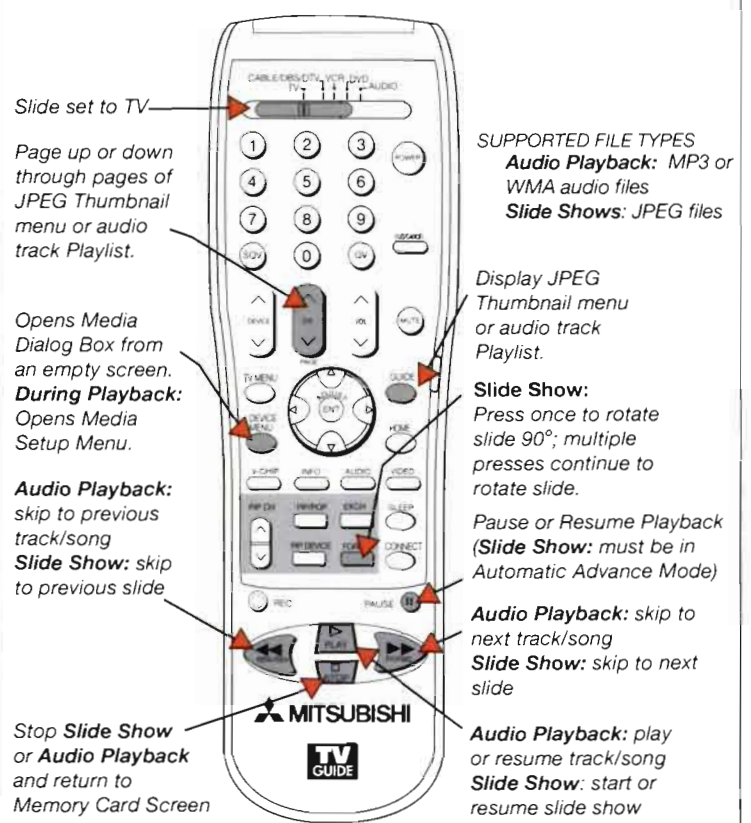


Note: Not every device supports all listed functions.

DVD and VCR Device Keys



Memory Card Device Keys

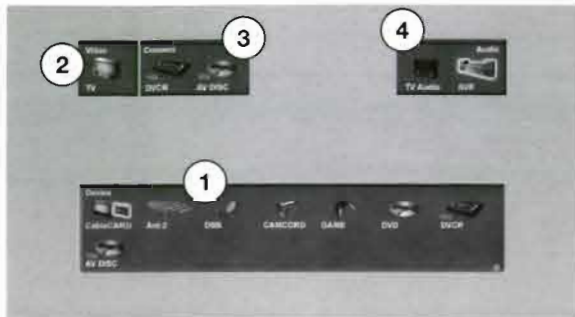


TV Features

Selecting a Device to Watch

Press DEVICE to open the Device Selection menu.

- Without NetCommand, use to select a viewing device/input.
- With NetCommand, use to select a device to view, select an audio source, power devices on/off.



- ① **Device Section:** Move the highlight to the icon for the device you want to view or hear and press ENTER. If the device does not automatically power on, press DEVICE again and then press POWER.
- ② **Video Section:** Shows the destination for the device highlighted in the Device Section.
- ③ **Connection Section:** Shows that a recording is in progress and the device (or devices) used for the recording.
- ④ **Audio Section:** Press AUDIO to access the Audio Section. Press ADJUST ◀ ▶ to select either the TV speakers icon or the A/V receiver icon. To power the A/V receiver on/off, highlight the A/V receiver icon and press POWER.

NetCommand Recording (manual setup without TV Guide On Screen®)

To start recording now:

1. Press REC (record).
2. Review the destination device and duration in the "Record To" section. Change if necessary.
3. Press REC a second time to start recording.

To set up a time-delayed recording:

1. Set the TV to the source you plan to record.
2. Press REC (record) or press MENU, select Record, and press ENTER.
3. Press ADJUST ▲ ▼ ◀ ▶ to select the Record To device, Duration, Start Time (press ENTER after selecting hour, minutes and AM or PM) and Day. For devices that can select channels, select the Channel.
4. Select Add and press ENTER to add the recording to the record list. A message will display on screen if the addition is successful or if there is a conflict.
5. To exit, press HOME.

To cancel a recording in progress:

1. Press DEVICE. The Device Selection menu will display.
2. Highlight the recording source.
3. Confirm that the recording device's icon is in the Connection Section next to the TV icon.
4. Press CANCEL. The recording device's icon will disappear from the Connection Section (confirming cancellation).

Program Scan with TV Pause and TimeShuttle

Skip forward and backward during current broadcasts or during playback of recorded programs on TV Disc. You can search as much of the program as is indicated on the TV Pause slider, up to the live broadcast point.

Note: Leave TV Pause and TimeShuttle set to Off to use PIP/POP features.

To Use TV Pause:

1. Press TV MENU, select the NetCommand icon, and press ENTER.
2. In the NetCommand menu, select On Request or Always for TV Pause, then press HOME.
3. Press PAUSE to pause the program. To control TV Pause:
 - REW or FF to skip backward or forward.
 - ADJUST ▲ to skip forward to the live broadcast and ADJUST ▼ to skip back to the earliest available part of the program.
 - ADJUST ◀ to skip backward in 12-second jumps.
 - ADJUST ▶ to skip forward in 30-second jumps.

To Use TimeShuttle:

1. Press TV MENU, select the NetCommand icon, and press ENTER.
2. In the NetCommand menu, select On for TimeShuttle. To use with TV Pause, set TV Pause to Always or On Request. Press HOME to close the menu.

3. Press REW or FF. Press REW or FF up to three additional times to increase the search speed.
4. When a frame of the desired program segment appears:
 - Press PLAY to start watching the program from that frame.
 - Press FF or REV to change the direction of the search.

If TV Pause is set to On Request, TimeShuttle becomes available when TV Pause is active. Press PAUSE to activate for the current channel or device.



Search for the exact scene you want with TimeShuttle.

To Turn Off TimeShuttle

To use the FF/REW keys for standard video scanning, turn off TimeShuttle:

1. In the NetCommand menu, Select Off for TimeShuttle.
2. If you wish to use the PIP/POP features, select Off for TV Pause.

Basic Remote Control Features

SQV (SuperQuickView™)

SQV allows you to put together lists of your favorite channels from Antenna 1 and Antenna 2. You can store channels in any of nine SQV memory banks or store the same channel in multiple memory banks.

To add or remove SQV channels:

1. Press TV MENU.
2. Highlight the channel icon to open the Channel Menu and make changes.

To view and change SQV banks

1. Press SQV.
2. Press the number key for a bank number within five seconds of pressing SQV.

To cycle through the channels available in the SQV bank:

Press SQV repeatedly.

Transport Keys

You can use the Transport keys or the Transport menu to operate the playback and record functions of a device.

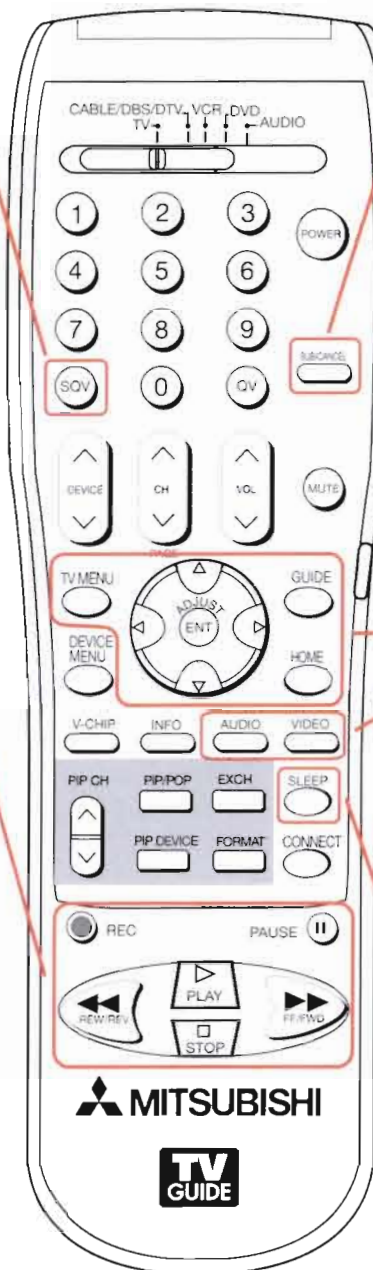
Note: When NetCommand is set up, there is no need to change the selection slider at the top.

When you select a NetCommand-controlled device, such as a VCR or DVD player, the Transport Menu automatically appears on screen.

To prevent display of the Transport Menu:

1. Press TV MENU
2. Select NetCommand
3. Set the Transport Menu option to Off.

Note: The Transport keys will still control the transport functions.



ViewPoint™ Menu

To display the Main menu:
Press TV MENU

To select a menu to change:
Press ADJUST ◀ or ▶.

To enter into a menu, start an automatic function, or select a check box:
Press ENTER

To move through a menu and change options:
Press ADJUST ▲▼◀▶.

To clear a setting or stop an automatic function.
Press CANCEL.

To move back one menu screen at a time:
Press TV MENU.

To exit all TV menus:
Press HOME.

AUDIO and VIDEO

To adjust individual Audio or Video settings:

1. Press AUDIO or VIDEO to cycle through the available settings.
2. Press ADJUST ◀ or ▶ to adjust the setting.

Sleep Timer

To set the Sleep Timer:

Press SLEEP repeatedly; the time will increase in 30-minute intervals, then Off.

To view the time remaining before the timer turns the TV off:

Press SLEEP or INFO.

To cancel the Sleep Timer:

1. Press SLEEP to display the timer.
2. Press SLEEP repeatedly until OFF is displayed.

Using the Memory Card Reader

1. To access the card reader, open the small door panel centered below the TV screen.
2. Insert a memory card into the correct slot. Usually, the label side goes up.

| | |
|--|--|
| Card 1 SmartMedia™ | Card 2 Multimedia Card™ SD Card |
| Card 3 CompactFlash® MicroDrive® | Card 4 Memory Stick PRO Memory Stick |

3. Press DEVICE on the remote control. The Device Selection Menu will display.
4. Use ADJUST ▲▼◀▶ to select the correct card slot number (1, 2, 3, or 4) from the list. The Media Dialog Box will display.
5. To select the media type, press AUDIO for an MP3 or WMA7 audio file, or press VIDEO for a slide show (JPEG images).
6. Press PLAY to start a slide show or to play audio.

Do not pull out a memory card while it is playing.

See your TV Owner's Guide for detailed information regarding remote control features.