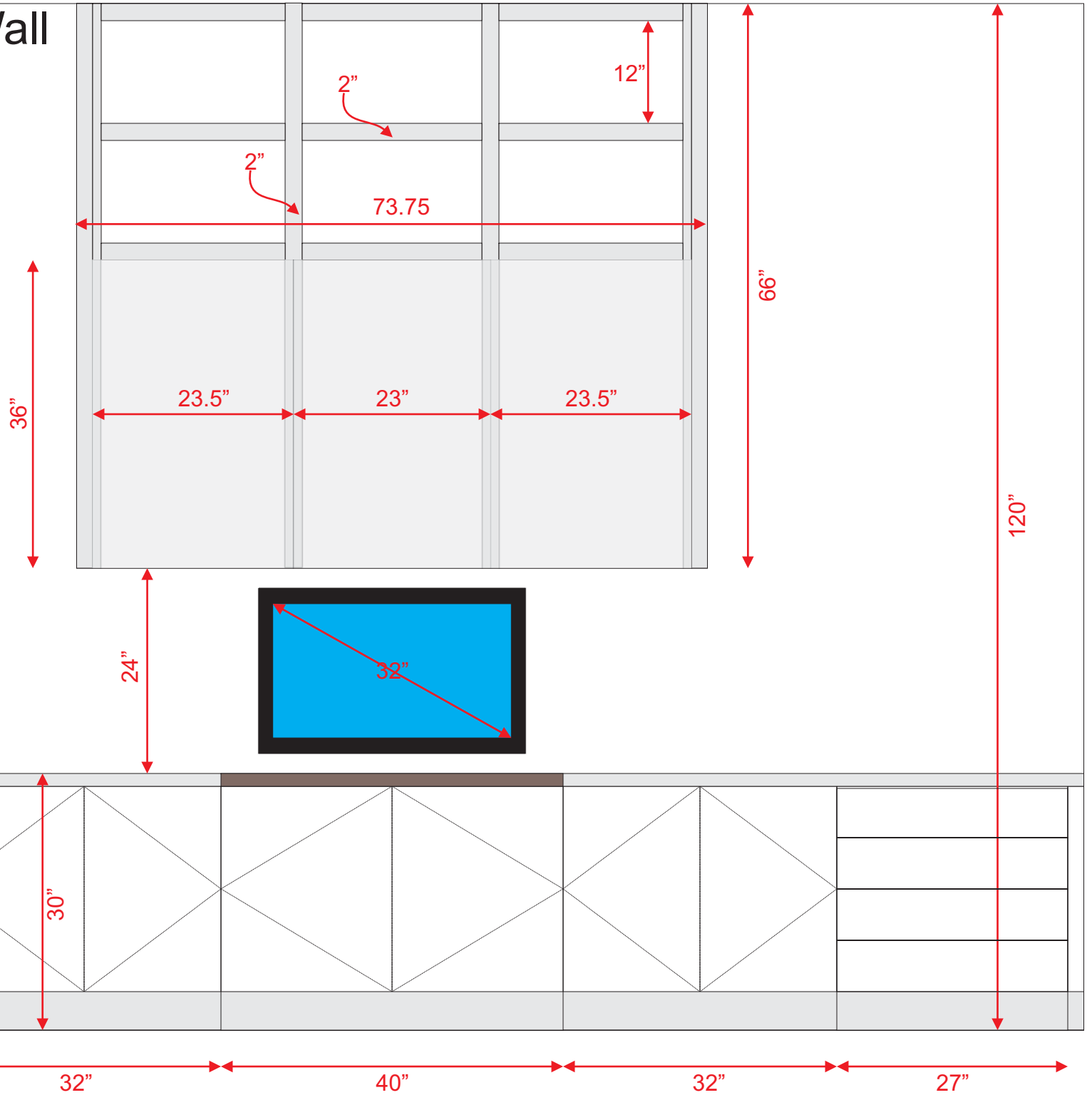
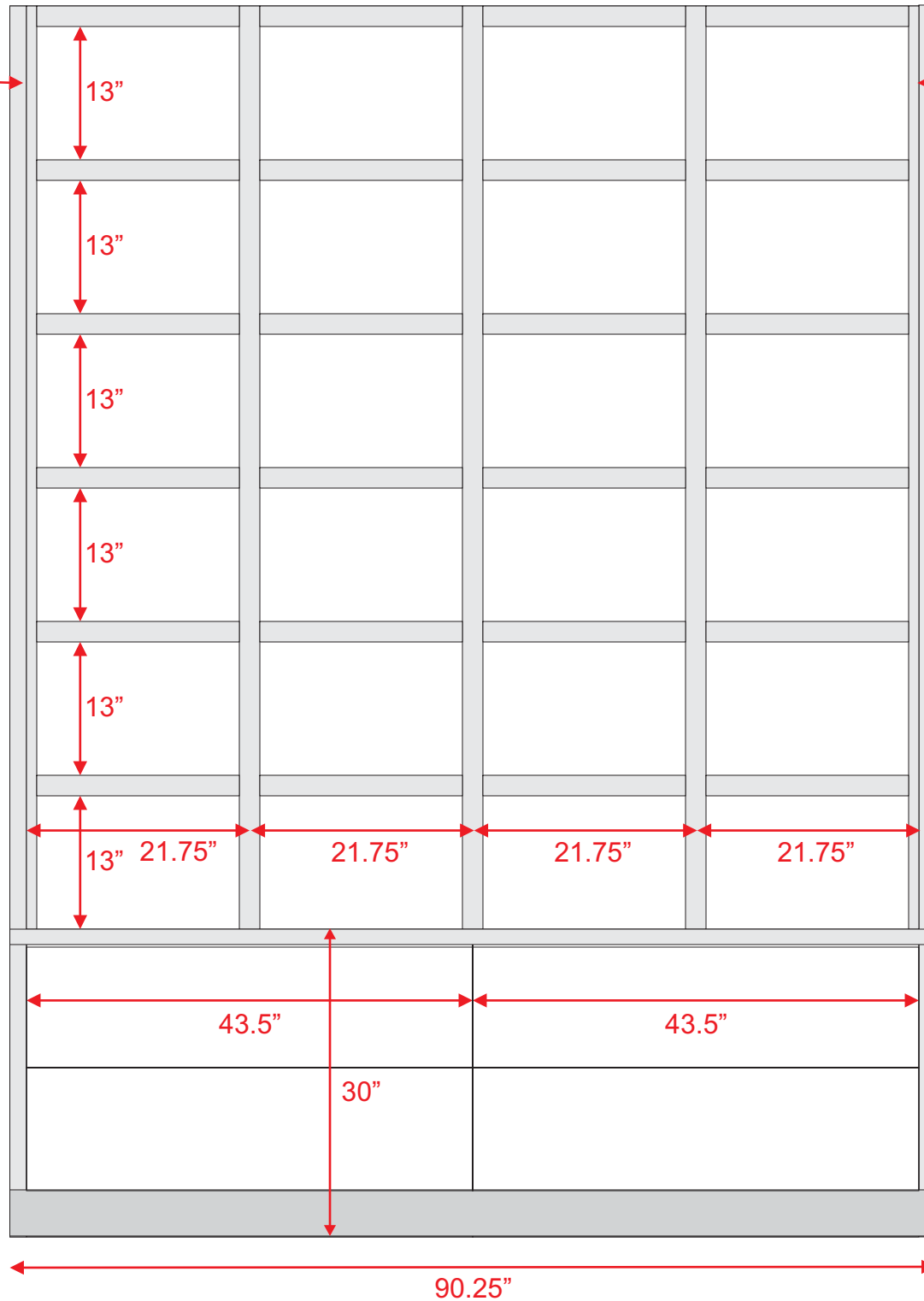


# Office North Wall



# Office West Wall

1 7/8"



1 7/8"

13"

21.75"

21.75"

21.75"

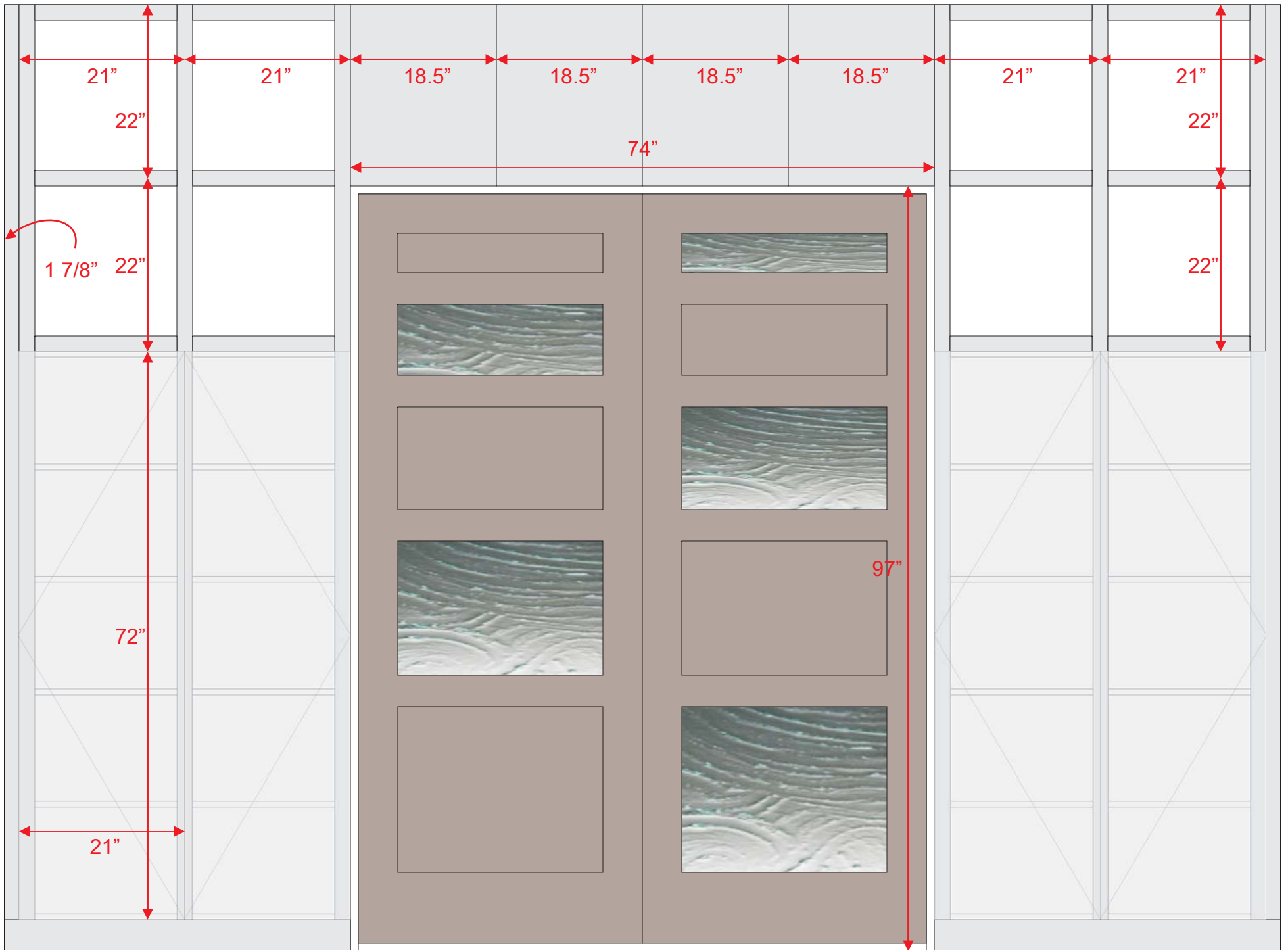
21.75"

43.5"

43.5"

30"

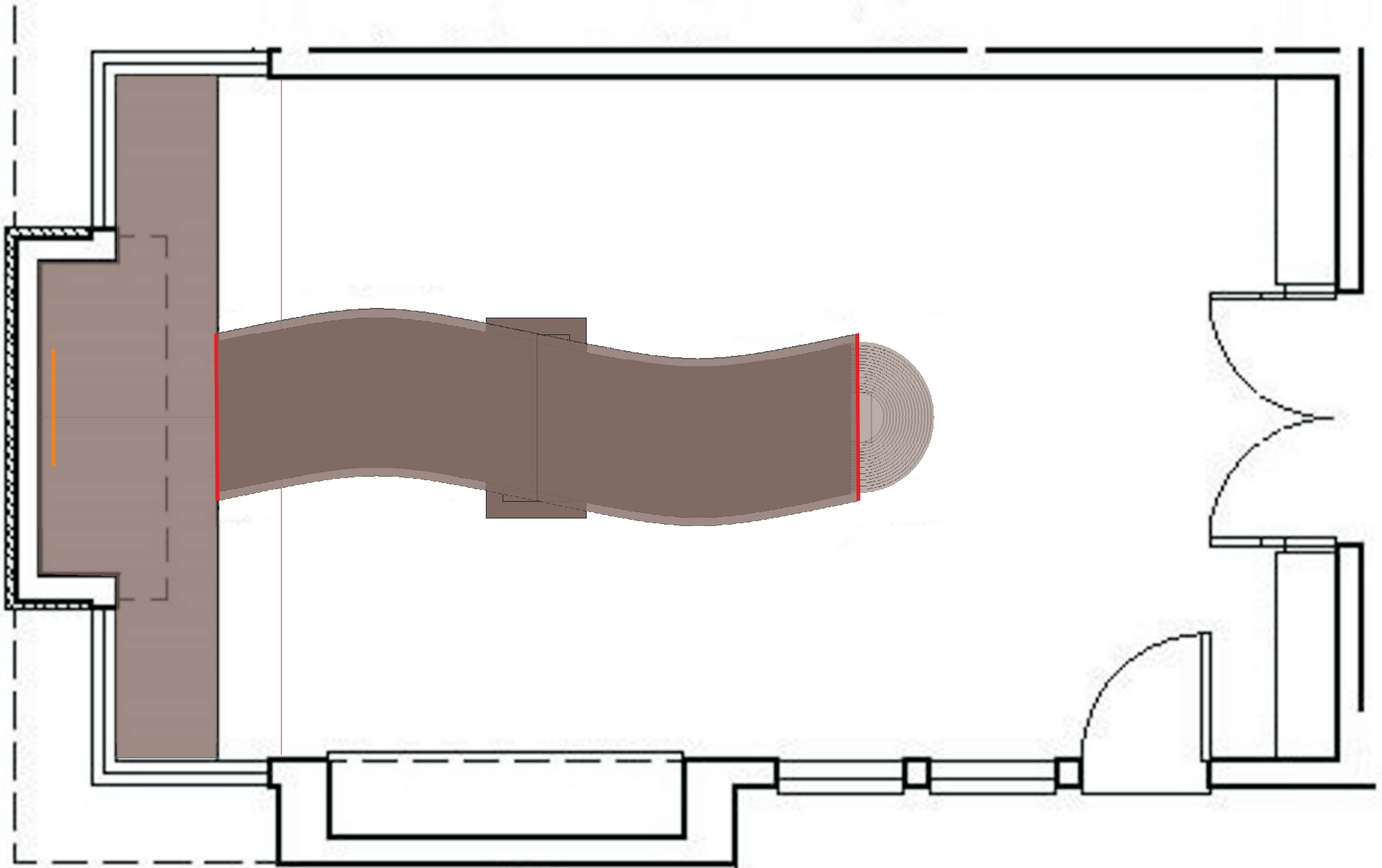
90.25"



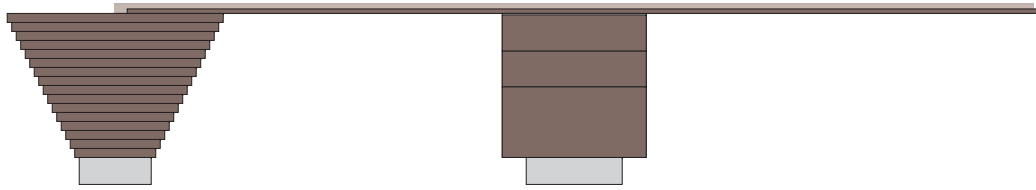
Office South Wall



74"



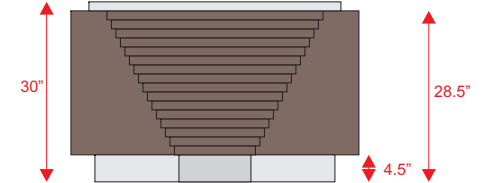
Plan View



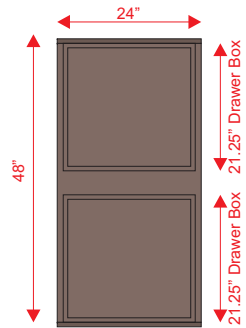
From East



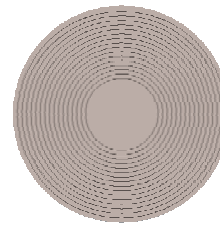
From West



From South

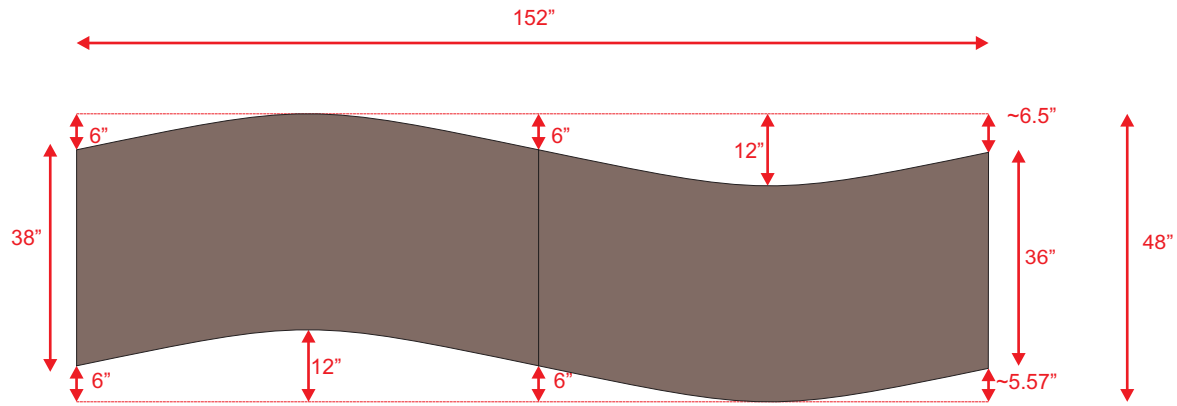
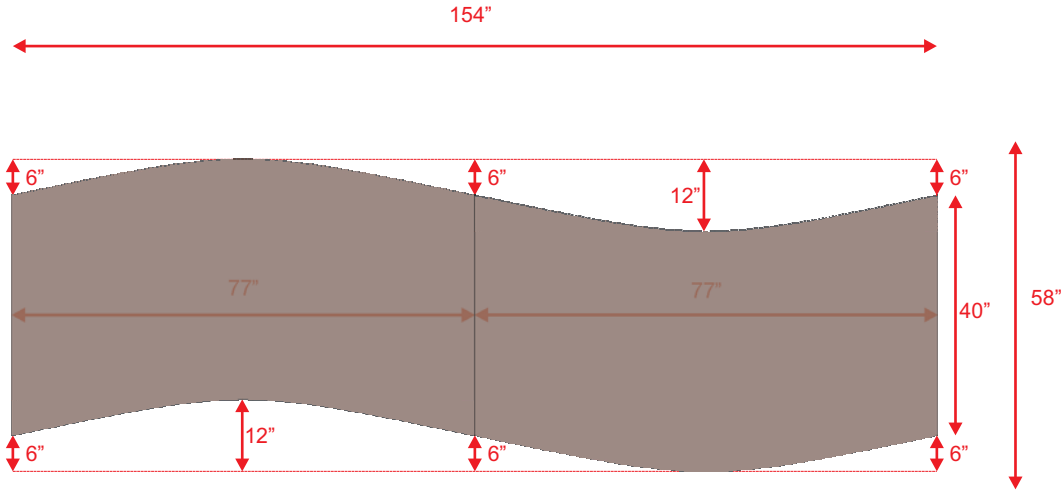


Top



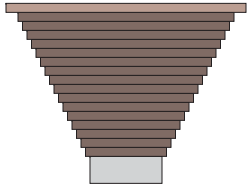
Top

# Stone



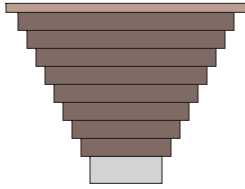
# Wood Base

Best



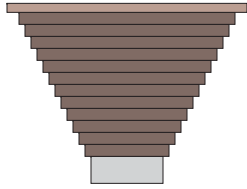
1.5"

Better



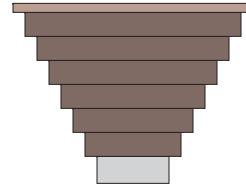
3"

Ok



2"

NoK



4"